

## CLASS™ Training Venue Information

**Training dates: April 24-26, 2012\***

**Training location: San Mateo, California**

**Venue:**

Marriott San Mateo San Francisco Airport ([map](#))

1770 South Amphlett Blvd.

San Mateo, CA, USA 94402

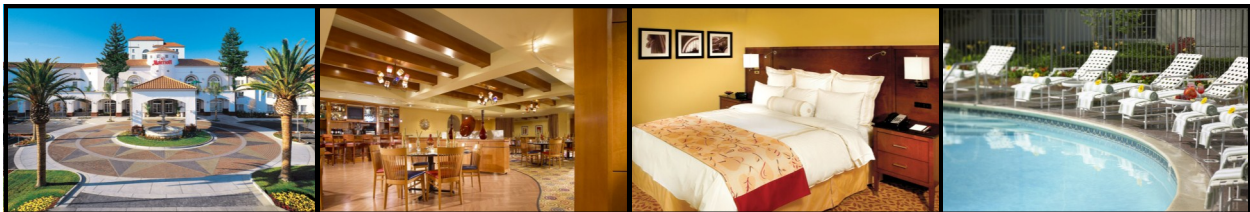
Tel: (650) 653-6000

**Hotel website:** [www.sanmateomarriott.com](http://www.sanmateomarriott.com)

**Transportation from San Francisco International Airport (SFO):**

The hotel runs a complimentary shuttle to and from San Francisco International Airport on an hourly basis between 5am and 9pm. For pick-up from the airport, call the main hotel number above. The hotel website gives details for [travel by Caltrain](#). Alternatively, taxi fare from the airport is approximately \$30.

**Parking:** For attendees staying overnight at the Marriott, parking is \$20.00 per night for self-parking and \$25.00 for valet parking. For attendees who are not staying overnight at the hotel, there is self-parking at \$1.50 per hour (max. \$20.00 per day) or valet parking at \$25.00 per day.



**Reservation information:**

Room rate: \$159.00 per night, double room

Rate includes: wireless internet

Rate does NOT include: taxes (currently 12% plus \$1.10 Tour ASM fee per night)

**\*\*Cut-off date for reservations: March 24, 2012**

Room reservations can be made by calling the hotel reservation office at 866.263.1461 and requesting the Teachstone CLASS Training rate. A credit card is required to guarantee the reservation.

\* There will be several CLASS™ trainings held over these dates. Please check your exact training dates before making your reservation.